

Soil Sensors



6470-6



6460



6450WD



3667



3669



6451

Light Sensors



3670I / 3676I



3668I6

WaterScout® SMEC 300 Soil Moisture/EC/Temperature Sensor

Measures soil moisture (Volumetric Water Content), EC, and temperature. Range: VWC: 0 to saturation (typically 50%), Accuracy: $\pm 3\%$; EC: 0 to 10 mS/cm, Accuracy: $\pm 2\%$. Requires WaterScout Calibration Device. Compatible with WatchDog 2000 Series Stations (Full and Mini), 1000 Series Micro Stations, and Pups

- 6470-6** WaterScout SMEC 300 Sensor with 6 ft (1.8 m) Cable
- 6470-20** WaterScout SMEC 300 Sensor with 20 ft (6.1 m) Cable
- 6470CAL3V** WaterScout Calibration Device
- 2251** Conductivity Standard, 1.41 mS/cm, 250 mL

WaterScout® SM 100 Soil Moisture Sensor

Measures soil moisture (Volumetric Water Content) with little or no disturbance to the root zone. Range: 0 to saturation (typically 50%), Accuracy: $\pm 3\%$. Compatible with WatchDog 2000 Series Stations (Full and Mini), 1000 Series Micro Stations, and Pups

- 6460** WaterScout SM 100 Sensor with 6 ft (1.8 m) Cable
- 6460-20** WaterScout SM 100 Sensor with 20 ft (6.1 m) Cable

Watermark Soil Moisture Sensor

Measures soil moisture tension from 0 to 200 centibars. Compatible with WatchDog 2000 Series Stations (Full and Mini), 1000 Series Micro Stations, and Pups

- 6450WD** Watermark Sensor with 11 ft (3.3 m) Cable
- 6450WD20** Watermark Sensor with 25 ft (7.6 m) Cable

External (Soil) Temperature Sensor

Measure soil, air, or water temperature with a resistance-based sensor. Range: -25 to 212°F (-32 to 100°C). Accuracy: $\pm 1^{\circ}\text{F}$ ($\pm 0.5^{\circ}\text{C}$). Compatible with WatchDog 2000 Series Stations (Full and Mini), 1000 Series Micro Stations, and Pups

- 3667** External (Soil) Temperature Sensor with 6 ft (1.8 m) Cable
- 3667-20** External (Soil) Temperature Sensor with 20 ft (6.1 m) Cable

Pressure Transducer

Connects to Irrrometer tensiometers and utilizes the dial gauge for measurements. Accuracy: $\pm 2\%$. Compatible with WatchDog 2000 Series Stations (Full and Mini), 1000 Series Micro Stations, and Pups

- 3669** Pressure Transducer

Irrigation On/Off Sensor

Record and analyze relationships between irrigation periods and soil moisture. Does not control irrigation system, but monitors on/off periods. Range: On at 5psi. Compatible with WatchDog 2000 Series Stations (Full and Mini), 1000 Series Micro Stations, and Pups

- 6451** Irrigation On/Off Sensor

LightScout® Silicon Pyranometer

Measure solar radiation between 300 and 1100 nanometers. 2000 Series & Pups Range: 2000 Series & Pups: 0 to 1500 W/m², Accuracy: $\pm 5\%$; Micro Stations: 0 to 1250 W/m², Accuracy: $\pm 5\%$. Compatible with WatchDog 2000 Series Stations (Full and Mini), 1000 Series Micro Stations, and Pups

- 3670I** LightScout Silicon Pyranometer

LightScout® UV Light Sensor

Measure UV radiation between 250 and 400 nanometers. Range: 0 to 200 $\mu\text{mol m}^{-2} \text{s}^{-1}$, Accuracy: $\pm 5\%$. Compatible with WatchDog 2000 Series Stations (Full and Mini), 1000 Series Micro Stations, and Pups

- 3676I** LightScout UV Light Sensor

LightScout® Quantum Light Sensors

Measure PAR light between 400 and 700 nanometers. Sensor bars average PAR light readings to minimize the effects of small shadows. Sensor bars are 19 in (48 cm) long and include mounting brackets. 2000 Series & Pups Range: 0 to 3000 $\mu\text{mol m}^{-2} \text{s}^{-1}$, Accuracy: $\pm 5\%$; Micro Stations: 0 to 2500 $\mu\text{mol m}^{-2} \text{s}^{-1}$, Accuracy: $\pm 5\%$. Compatible with WatchDog 2000 Series Stations (Full and Mini), 1000 Series Micro Stations, and Pups

- 3668I** LightScout Quantum Light Sensor
- 3668I3** LightScout Quantum 3 Light Sensor Bar
- 3668I6** LightScout Quantum 6 Light Sensor Bar

Environmental Sensors



3667S

Temperature (Micro) Sensor

Measure surface temperature of leaves, buds, and other tiny mediums. Range: -25 to 212°F (-32 to 100°C). Accuracy: ± 1°F (±0.5 °C). Compatible with WatchDog 2000 Series Stations (Full and Mini), 1000 Series Micro Stations, and Pups

3667S **Temperature (Micro) Sensor**



3665R

Tipping Bucket Rain Collector

Measure rainfall in 1/100 inch increments. Self-emptying and freeze resistant. Range: 0.01", 0.25 mm, Accuracy: ±2% at < 2 in (5 cm) per hour. Compatible with WatchDog 2800 Series Station and 1000 Series Micro Stations

3665R **Tipping Bucket Rain Collector**



3666

Leaf Wetness Sensor

Measure leaf wetness with a resistance-based sensor designed to replicate a leaf. Range: 0 (dry) to 15 (wet). Compatible with WatchDog 2000 Series Stations (Full and Mini), 1000 Series Micro Stations, and Pups

3666 **Leaf Wetness Sensor**



3671

Barometric Pressure Sensor

Measure atmospheric pressure. Standard Sensor: Range: 26 to 32 inHg, 880-1080 hPa, Accuracy: ±0.05 inHg, ±1.7 hPa; High Altitude Sensor: 18.75 to 33.1 inHg, 635-1121 hPa, Accuracy: ±0.057 inHg, ±1.9 hPa
Compatible with WatchDog 2000 Series Stations (Full and Mini), 1000 Series Micro Stations, and Pups

3671 **Barometric Pressure Sensor - Standard**
3671M **Barometric Pressure Sensor - High Altitude**



2655

CO₂ Sensor

Measure CO₂ levels in ppm using NDIR technology. Requires AC power. Not waterproof. Range: 0 to 4000 ppm, Accuracy: ±5% or 50 ppm. Compatible with WatchDog 2000 Series Stations (Full and Mini), 1000 Series Micro Stations, and Pups

2655 **CO2 Sensor**

Miscellaneous Cables



3664

Sensor Extension Cable

20 ft (6 m) extension for all sensors (except digital sensors), connect up to 3 cables per sensor

3664 **Sensor Extension Cable**



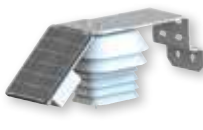
3673

General Input Cables

Connect non-WatchDog sensors to your WatchDog Station. (Item 3673) Range: 0 to 3v, Accuracy: ±0.005V. (Item 3674) Range: 0 to 20.1 mA, Accuracy: ±1%. Compatible with WatchDog 2000 Series Stations (Full and Mini), 1000 Series Micro Stations, and Pups

3673 **0-3V Input Cable**
3674 **4-20mA Input Cable**

Digital Sensors (for Pups only)



3613ARS

Digital Temperature/RH Sensor with Aspirated Radiation Shield

Digital temperature and RH sensor with 6 ft (2 m) cable, includes solar charging system to power internal fan. Range: -40 to 212°F (-40 to 100°C), 0 to 100% RH, Accuracy: ±0.54°F from 50 to 131°F (0.3°C from 10 to 55°C), ±2.5% RH Compatible with WatchDog Pups only. Operating temperature 14 to 140°F (-10 to 60°C)

3613ARS **Temperature/RH Sensor with Aspirated Radiation Shield**



3613THS

Digital Temperature/RH Sensor with Passive Radiation Shield

Digital temperature and RH sensor with 6 ft (2 m) cable. Range: -40 to 212°F (-40 to 100°C), 0 to 100% RH, Accuracy: ±0.54°F from 50 to 131°F (0.3°C from 10 to 55°C), ±2.5% RH Compatible with WatchDog Pups only

3613THS **Temperature/RH Sensor with Passive Radiation Shield**



3665RD

Digital Rain Collector

Measure rainfall in 1/100 inch increments. Self-emptying and freeze resistant. Range: 0.01", 0.25 mm, Accuracy: ±2% at < 2 in (5 cm) per hour. 6 ft cable. Compatible with WatchDog Pups only

3665RD **Digital Rain Collector**
3665DC **Digital Cable - 6 ft**
Cable with tinned wire termination - for Pup connection to existing rain collectors only



3305ADD

Digital Anemometer

Measure wind speed and direction. 40 ft cable. Range: 0 - 359°, Accuracy: ±3°, Range: 0, 1 to 200 mph (0, 1 to 322 km/h, Accuracy: ±2 mph (±3 km/h), ±5%. Compatible with WatchDog Pups only

3305ADD **Digital Anemometer**